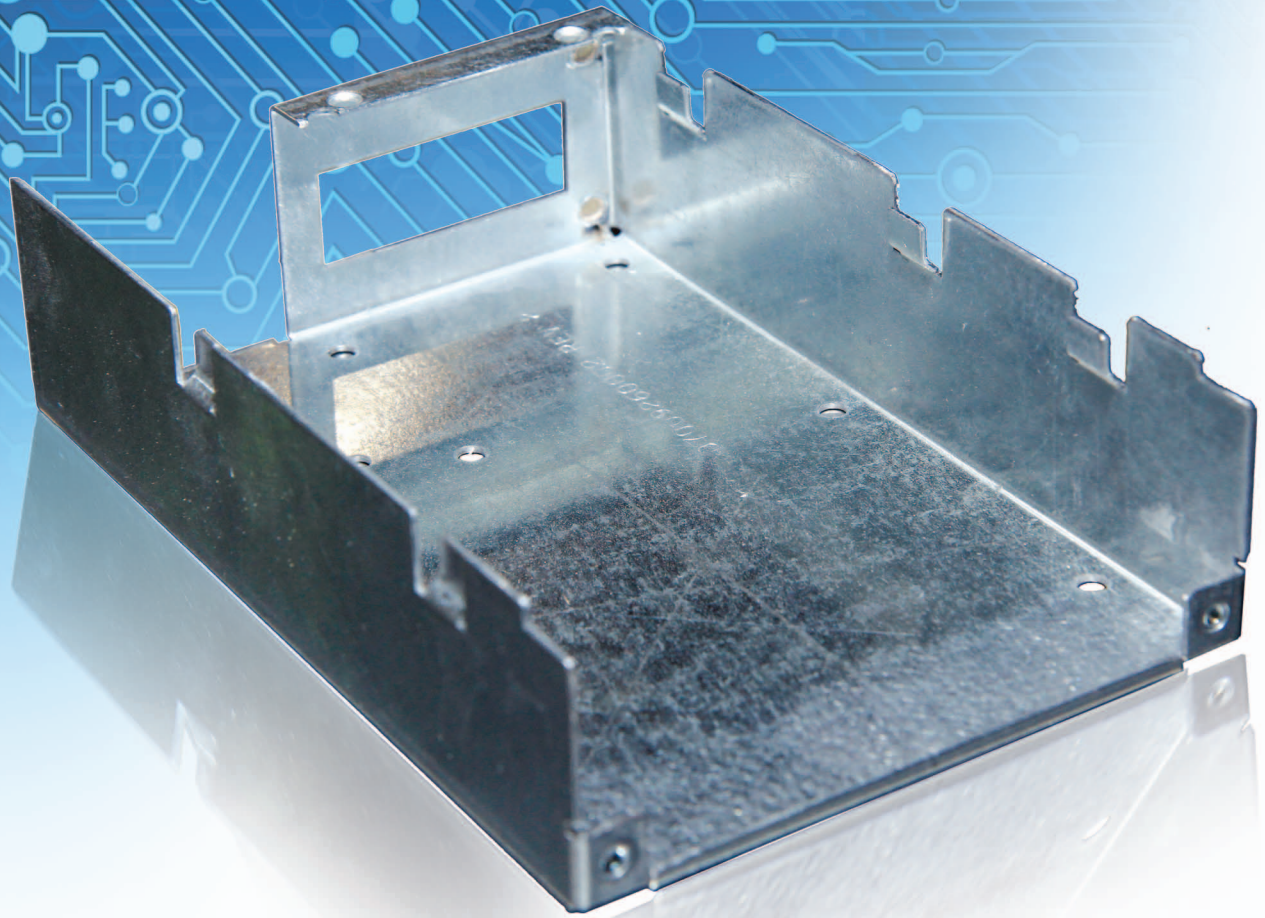


# Sheet Metal & Enclosure Fabrication



## Sheet Metal & Enclosure Fabrication

Concurrent Manufacturing Solutions' sheet metal fabrication facility is positioned to support all production needs from rapid prototyping through volume manufacturing. Our pre-production engineers are available to work through the design phase of your project to undertake DFM reviews for your product. Using the latest state-of-the-art design tools, we can accept design files from all major CAD system formats to analyze your product in detail.

At Concurrent Manufacturing Solutions, our skilled technicians use MIG, TIG and resistance welding equipment to weld a wide range of materials, from very light gauge to heavy gauge precision products. Our welders are ANSI/AWS Certified to D1.1, D1.3, D1.17 MIL STD 2219 & AMS STD 1595 steel and aluminum.

Concurrent Manufacturing Solutions is your partner for success. We offer quick turn development support and production scale manufacturing services. Our dedicated team has a strong background in fabrication and paint which supports creating a successful, cost-efficient, high quality product.

Capabilities Include:

- Design Assistance
- Shearing
- CNC Turret Punching
- CNC Tapping
- Forming (Press Brakes)
- Certified Welding (Aluminum and Steel)
- Tig and Mig Welding
- Spot Welding (Aluminum and Steel)
- Hardware Insertion
- Riveting
- Automated Powder Painting



### Our Core Services:

- PCB Assembly
- Cables & Harnesses
- Backplane Assembly
- High Level Assembly & Integration
- Sheet Metal & Enclosure Fabrication

### Our Expertise:

We excel at low-to-medium volume production of highly complex electro-mechanical products and systems. Our technical expertise, responsiveness and flexibility gives us the ability to skillfully assemble and integrate cables, backplanes, PCBA, electro-mechanical assemblies as well as sheet metal fabrication.

### Our Commitment to Quality:

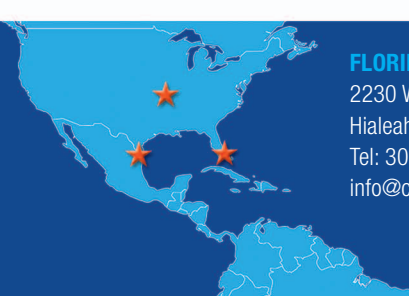
Concurrent Manufacturing Solutions is a strong proponent and champion of Lean Management and Six Sigma efficiency and quality drivers. Concurrent holds the following certifications and utilizes the following quality standards:

- ISO 9001:2008 Registered
- AS9100 Registered
- IPC-A-610 Workmanship Certified
- IPC-A-620 Workmanship Certified
- J-Std-001 Soldering Certified
- AWS D1.2 & AWS D1.3 Certified Welders
- ITAR, TUV, FCC, UL, CSA Agency Certified
- RoHS & Lead Free Process Certified
- REACH Compliant

### Our Facilities:

We have manufacturing locations in Florida (cable and HLA products), Missouri (backplanes, PCBA, HLA) and Matamoros, Mexico (cable, sheet metal fabrication and powder coating, PCBA, HLA). Each of our sites is ISO-9001/2008 Registered and combined offers over 170,000 square feet of manufacturing, design, assembly and customer support services.

*Your trusted source for contract manufacturing and complex products that exceed your requirements.*



**FLORIDA (Headquarters):**  
2230 West 77th Street  
Hialeah, FL 33016 USA  
Tel: 305.556.9210  
info@concurrentmfg.com

**MISSOURI:**  
1624 West Jackson Street  
Ozark, MO 65721 USA  
Tel: 417.616.5300  
info@concurrentmfg.com

**TEXAS (Distribution):**  
2685 N. Coria Street  
Brownsville, TX 78520 USA  
Tel: 956.525.4514  
info@concurrentmfg.com

**MEXICO:**  
Av. Cantinflas #14  
Parque Industrial Cylsa  
H. Matamoros, Tamps., Mexico  
C.P. 87479  
Tel from U.S.: 956.525.4514  
Tel from Mexico: 868.814.2868, 868.814.2869